

BETWEEN US
Visual Stories of Intimate Affection

MEDIA - KIT

by
SONALY GANDHI

TABLE OF CONTENT

- [Curatorial Note](#)
- [Artist bio \(long version\)](#)
- [Artist bio \(short version\)](#)
- [Exhibition concept note](#)
- [6 Select Images with details](#)
- [Exhibition and Contact details](#)

LINKS FOR DOWNLOAD

[Media - Kit Content](#)
[Digital Catalogue](#)

CURATORIAL NOTE :

"Between Us" : Visual Stories of Intimate Affection

In her Solo Show **"Between Us"**, contemporary figurative artist **Sonaly Gandhi** explores evolving emotions in today's rapidly changing world, where women are no longer inheriting prescribed roles in love, they are authoring their own narratives of companionship and commitment.

At the heart of "Between Us" lies the artist's unwavering belief in equality. With the expansion of the socio-political empowerment, long-held patriarchal scripts around relationships are eroding as women assert autonomy in choosing whether, how, and with whom they share their futures.

Hence, the women in her paintings stand poised and unapologetic, sometimes embracing affection, with no restraints, at other times stepping away from relationships that deny them respect. These portrayals redefine feminine strength, not as opposition but as balance. A harmony where both feminine and masculine energies coexist, distinct yet inseparable.

Through her mastery of composition and a refined, contemplative palette, Sonaly captures contemporary relationships in their most sincere form. The absence of attire or ornamentation in her subjects is not only symbolic but deliberate, removing boundaries of identity, society, and culture. This conscious anonymity transforms her figures into universal beings, representing the raw connection and growing freedom to define intimacy on their own terms.

Her signature style, defined by perfect geometric forms like squares, checks, and butterflies, acts as a metaphor for the modern human's constant pursuit of balance and perfection within the imperfect landscape of love and relationships.

For Sonaly, "Between Us" is more than a collection of paintings about the evolving relationships in a rapidly changing world. It is her invitation to the audience to pause, reflect, and find resonance with a piece of your own story, a moment you may have lived, loved, or longed for.

ARTIST BIO : (Long Version)

Sonaly Gandhi is a Hyderabad-based contemporary figurative artist known for her emotionally charged paintings that explore intimacy, gender equality, and the evolving language of human relationships in the twenty-first century.

Her practice is anchored in a profound admiration for the human form, a fascination that began in childhood after encountering the famous sculpture "David" by Michelangelo, an experience that left an enduring imprint on her imagination. That early moment of awe evolved into a lifelong engagement with anatomy, expression, and the silent eloquence of the body, shaping her identity as a primarily figurative artist. While she has explored diverse subjects, the human figure remains her most instinctive and intimate language.

Central to her work is a deeply held commitment to gender equality. Sonaly's canvases consciously foreground women as strong, self-aware, and emotionally complex, while acknowledging the historical imbalance that has shaped gender relations. Rather than portraying conflict, her paintings examine tenderness, negotiation, vulnerability, and mutual dependence: offering a nuanced visual discourse on how love and partnership are being redefined in a rapidly changing world. Many of her narratives draw from her own life and the lives of those closest to her, transforming personal memory into universally resonant imagery that invites viewers to see fragments of their own stories reflected on the canvas.

Working predominantly in acrylic on canvas, Sonaly is recognized for her meticulously balanced compositions and a distinctive visual vocabulary in which her subjects are veiled with precise geometric motifs: squares, checks, and butterflies. These forms serve as metaphors for the modern individual's pursuit of equilibrium and perfection within the imperfect terrain of love and companionship. By intentionally removing attire, ornamentation, and markers of identity, her figures transcend boundaries of culture and geography, emerging as universal embodiments of intimacy and connection. This synthesis of emotional immediacy and symbolic structure sets her practice apart within the contemporary figurative landscape.

Her artistic philosophy has been shaped by pioneering modernists such as Amrita Sher-Gil and Anjolie Ela Menon, whose fearless explorations of the human condition affirmed her commitment to candid storytelling through figuration. Sonaly extends this lineage through a distinctly contemporary lens, combining formal restraint with emotional accessibility.

Sonaly's work has received significant international recognition. She has exhibited at major global platforms including ArtExpo New York, Miami River Art Fair, Paris Art Fair, and respected galleries across Europe, alongside prominent showcases in leading Indian galleries. Her paintings are held in distinguished private collections worldwide and have been acquired by noted collectors and interior designers across continents. She maintains a strong presence on premier international art platforms such as Artsy, Artfinder, Artmajeur, Fine Art America, and Saatchi Art, reflecting sustained global engagement with her practice.

Her works have been featured in newspapers, publications, and curated exhibitions, affirming her growing influence as a distinctive voice in contemporary figurative art. Beyond exhibitions, she actively engages with collectors and audiences through conversations that encourage deeper emotional connection with art.

What distinguishes Sonaly Gandhi is her ability to transform lived experience into universal visual poetry. Her canvases do not merely depict figures; they explore the fragile spaces between individuals where memory, desire, trust, and silence converge. Through her evolving body of work, she continues to create paintings that are at once deeply personal and widely resonant: quiet yet powerful meditations on intimacy, equality, and the enduring human need to belong.

ARTIST BIO : (Short Version)

Sonaly Gandhi is a Hyderabad-based contemporary figurative artist whose work examines intimacy, gender dynamics, and human connection in the twenty-first century. Her fascination with the human form began in childhood after encountering *David* by Michelangelo, shaping her evolution into a primarily figurative painter.

Working in acrylic on canvas, she is known for balanced compositions and a distinctive visual language in which figures are veiled with geometric motifs symbolizing the modern pursuit of perfection within love.

Her paintings, informed by personal narratives yet universal in appeal, have been exhibited internationally and are held in prominent private collections worldwide, establishing her as a compelling voice in contemporary figurative art.

EXHIBITION CONCEPT NOTE :

The body of work in "Between us" explores the emotional landscape that forms between two people as love evolves over time. It reflects on trust, longing, playfulness, separation, and resilience, the quiet forces that shape relationships beyond grand gestures.

As social realities shift and inherited roles loosen, intimacy emerges as a space of negotiation, vulnerability, and renewal, especially from a woman's perspective reclaiming agency within love.

A defining element of this body of work is the artist's signature use of geometric forms overlaying the human figure. Perfect patterns act as both adornment and restraint, echoing the modern impulse toward an almost relentless pursuit of balance and perfection. These forms suggest the invisible systems of social expectations, personal ambitions, emotional defences, that shape how we give and receive love today. They reflect a central tension of contemporary relationships: the longing to remain free and authentic while navigating the pressures to appear composed, equal, and whole.

In this interplay between organic bodies and measured geometry, the paintings reveal how the quest for equilibrium and excellence can both sustain intimacy and quietly strain it, mirroring the delicate negotiations at the heart of modern love. Through sensuous figurative compositions that balance grace with emotional tension, each work captures a suspended moment: familiar to anyone who has loved, lost, endured, or begun again.

These paintings invite viewers to pause, recognize fragments of their own stories, and reflect on the fragile yet transformative space where connection lives.

SELECT IMAGES

ACRYLIC ON CANVAS

Here, the classical stands still,
while the contemporary moves freely,
her gaze lingering with admiration
on an ideal carved in stone.

A quiet conversation across centuries,
where form changes,
but the soul of art does not.



ADMIRING DAVID

36 X 30 inches

2017

She moves freely.
Fearless. Strong. Unapologetic.
wearing freedom like her own skin.

Being watched no longer alters her.
She does not resist the gaze.
She outgrows it.

The world keeps counting.
She keeps becoming.



FREEDOM

36 X 30 inches

2017

She leans back and relaxes,
not waiting for anyone.

The music finds her,
and she lets it stay.

Nothing is missing here
not touch, not words, not approval.

In her own company, she remembers
this is what it means to be enough.

IN HARMONY
60 X 42 inches
2016



She stands where stories repeat,
though time insists it has moved on.

She struggles to get back her respect,
at becoming whole in a world that keeps fracturing her.

From ancient epics to modern times,
the same questions echo:
Who is watching?..Who will speak?..Who will stop it?

Stories change their names, not their wounds.
Justice does not arrive, the wait is endless

This is not her burden alone.
It never was.

JUSTICE

66 X 48 inches

2018



The Queen reclines,
letting confidence do the talking,
her hand tempts fate.

The King considers his move,
his smile knows the game

Cards shimmer, chessmen wait
romance disguised as a game.

Someone observes, curious yet aware,
that the most interesting moves
are never announced.

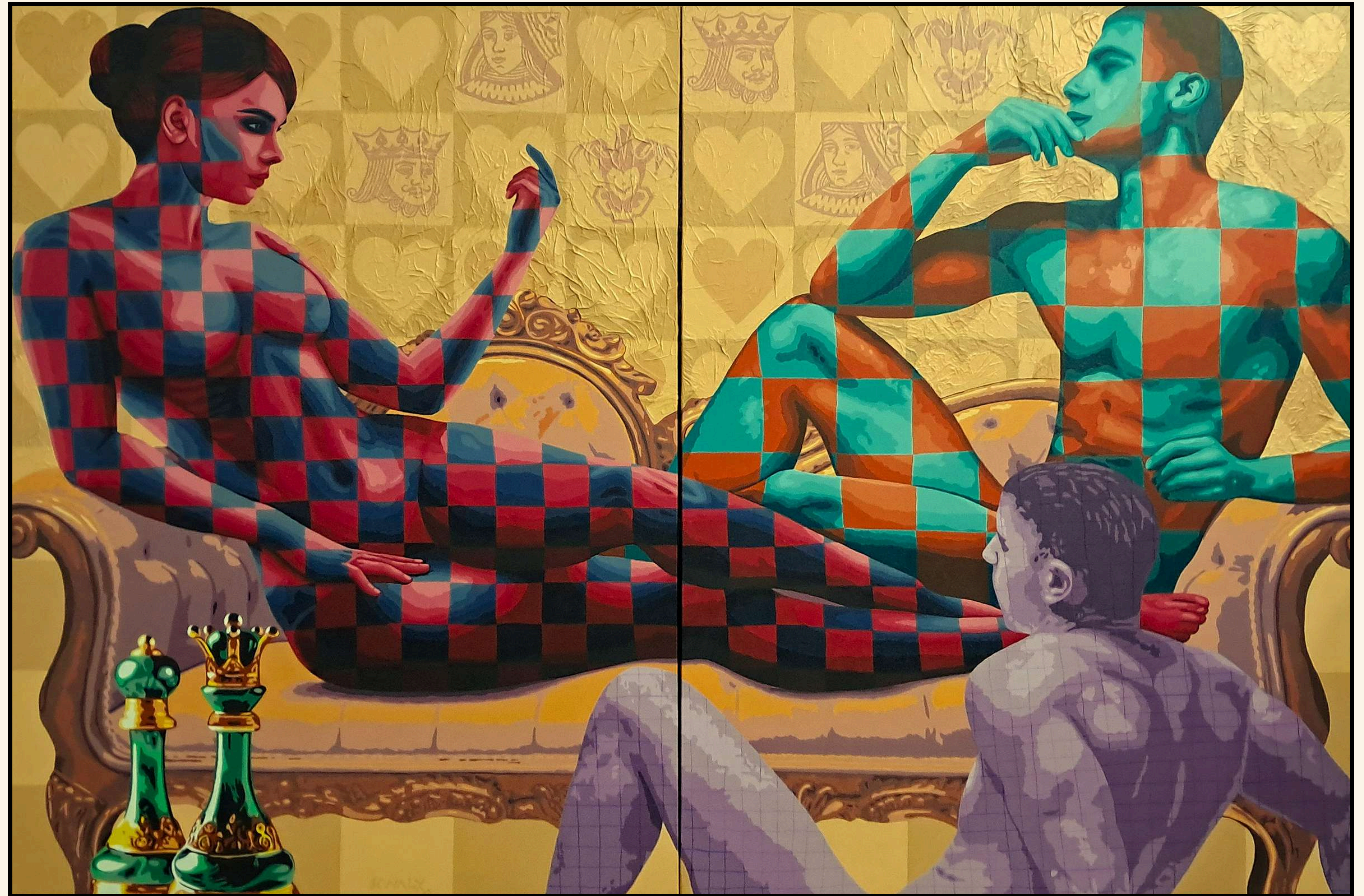
Who's winning?
Who's watching?
Who dares to play next?

KING AND QUEEN OF HEARTS

72 x 48 inches

2025

Diptych (2 canvases of 36 x 48 x 1 each)



She pauses with the mask in hand.
unsure, is she putting it on
or finally letting it go?

He reaches up,
asking for what is real.

The past hangs around them.

Love stands still
waiting for truth to speak.



UNMASKED LOVE

48 X 36 inches

2025

SOLO EXHIBITION DETAILS

TITLE: **"BETWEEN US"** : Visual Stories of Intimate Affection

ARTIST: **SONALY GANDHI**


VENUE: **JEHANGIR ART GALLERY**

Hirji Gallery, 1st Floor, M.G. Road,
Kala Ghoda, Fort, Mumbai 400001

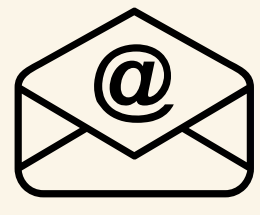
TIME: Pre View: **13 April**, 4 pm - 7 pm

On view: 14 - **19 April**, 11 am - 7 pm

CONTACT DETAILS

 +91 95818 60003

 www.sonalygandhi.com

 sonalygandhiart@gmail.com



THANK YOU